

SHARP®

Integrated Digital Media Software
for the VN-EZ1 MPEG-4 Digital Recorder



Required Hardware and software

Features of this software

Installing Adobe Acrobat Reader

Installing PixLab Media Browser

Uninstalling the Software

Viewing the online manual

Installation Guide

Please read this Installation Guide
carefully before using your software.

0346TAZZ

YOU SHOULD CAREFULLY READ THE FOLLOWING BEFORE OPENING THE SEALED DISK PACKAGE. THIS IS A LEGAL DOCUMENT WHICH CONSTITUTES YOUR AGREEMENT AS END USER FOR THE USE OF THE SOFTWARE IN THAT PACKAGE. BY OPENING THE SEALED DISK PACKAGE, YOU INDICATE YOUR ACCEPTANCE OF THIS LIMITED USE SOFTWARE LICENSE.

IF YOU DO NOT AGREE TO THE TERMS OF THIS AGREEMENT, PROMPTLY RETURN THE UNOPENED DISK PACKAGE AND THE ACCOMPANYING ITEMS WITH YOUR SALES RECEIPT TO YOUR VENDOR.

LIMITED USE SOFTWARE LICENSE

In consideration of the license fee, which is a part of the price you paid for this product, Sharp Corporation, as Licensor, grants to you, the Licensee, a non-exclusive software license to use the Software and related documentation supplied herein. The terms of this license are as follows:

1. You may use the Software on a single computer at a single location.
2. As the Licensee, you own the physical media on which the Software is recorded, the Licensor retains title and ownership of the Software, regardless of the form or media in or on which the original and other copies may exist. This License is not a sale of the original Software or any copy thereof.
3. You are required to protect the copyright of the Software. You may NOT distribute or otherwise make the Software or documentation available to any third party without the prior written consent of the Licensor. You may be held legally responsible for any copyright infringement that is caused or encouraged by your failure to abide by the terms of this License.
4. You may NOT modify or alter the Software. Any portion of the Software that is merged into or used in conjunction with other software will continue to be the property of the Licensor and will be subject to the terms of this License.
5. You are permitted to copy the Software for exclusive use as your working copy. Any such copy must contain the same copyright notice and proprietary marking as the original Software.
6. You may not transfer or assign the Software or this License to any other person without the prior written consent of the Licensor. Any authorized transferee of the Software shall be bound by the same terms and conditions of this License and, in such case your license is automatically terminated. In no event may you transfer, assign, rent, sell, or otherwise dispose of the Software on a temporary or permanent basis except as expressly provided herein.
7. This License is effective until terminated. This License will terminate automatically without notice from the Licensor if you fail to comply with any provision of this Agreement. Upon termination you will destroy the Software together with all copies and modifications in any form.
8. The Software has been tested and the documentation has been reviewed. However, THE LICENSOR MAKES NO WARRANTY OR REPRESENTATION INCLUDING THE IMPLIED WARRANTIES OF MERCHANTABILITY AND FITNESS FOR USE, ALL OF WHICH ARE EXCLUDED. Some states do not allow exclusion of implied warranties so the above disclaimer may not apply to you.
9. The Licensor will not be liable or in any way responsible for any incidental or consequential economic or property damage in connection with the Software or its documentation. Some states do not allow the exclusion of incidental or consequential damages so the above exclusion may not apply to you.
10. Restricted Rights Legend. The enclosed software and documentation have been developed at private expense and are commercially available at published prices. If such software and documentation are acquired under a United States Department of Defense contract, use, duplication, or disclosure by the Government is subject to restrictions as set forth in subparagraph (c) (i) (ii) of the Rights in Technical Data and Computer Software clause at DFARS 252.227-7013. Contractor: Sharp Corporation, 22-22 Nagaik-cho, Abeno-ku, Osaka, 545 Japan. If such software and documentation are acquired by any other agency of the U.S. Government, use, duplication, or disclosure by the Government is subject to restrictions as set forth in subparagraph (g) (3) of FAR 52.227-14 or FAR 52.227-19, as applicable.

THIS LICENSE GIVES YOU SPECIFIC LEGAL RIGHTS. YOU MAY ALSO HAVE OTHER RIGHTS WHICH VARY FROM STATE TO STATE.

The "Readme.txt" file in the root directory of the PixLab Media Browser/ Installer CD-ROM contains late-breaking important information that is not included in this Installation Guide.

Required Hardware and software

The hardware and software listed below is required to use PixLab Media Browser.

Computer^{*1}	IBM PC/AT or compatible
OS	<ul style="list-style-type: none">● Microsoft Windows 98 (recommended)● Microsoft Windows 95²● Internet Explorer 4.01 Service Pack x or Internet Explorer 5
CPU³	Pentium 133 MHz or higher (MMX Pentium 200 MHz or higher recommended)
Memory³	32 MB or more (64 MB or more recommended)
Free hard disk space required for installation	Approx. 15 MB (PixLab Media Browser only) Approx. 80 MB (when all the included software ⁴ listed below required for running PixLab Media Browser is installed) Microsoft Windows Media Player Microsoft DirectX 6.1 Microsoft DirectX Media 6.0 Runtime Adobe Acrobat Reader 4.0
Free hard disk space required when running the software.	Approx. 60 MB (When using 16 MB movie files or approximately 60 BMP files with an image size of 640 x 480) <ul style="list-style-type: none">● More free space may be required, depending on the size of the files used.● Not including space for saving the files.
Hard disk performance³	Ultra ATA/33 or higher recommended
Display and video card³	800 x 600 pixels or more resolution, 65,536-color display capability (16 bit) (16,777,216 colors (24 bit) or more recommended) Compatible with DirectX 6 ⁶
Sound card	SoundBlaster or SoundBlaster compatible sound card (one is absolutely required)
Interface conditions	Floppy disk adapter or PC card adapter (sold separately) (one is absolutely required)

CD-ROM drive

Software ^{*9}

Microsoft Windows Media Player
Microsoft DirectX 6.1
Microsoft DirectX Media 6.0 Runtime
Adobe Acrobat Reader 4.0

Caution

- *1 SHARP Corporation does not guarantee that this software will operate on all computers. In particular, operation of this software is not guaranteed on computers you have made yourself or computers on which the mother board has been modified.
- *2 Service Pack 1 must be installed when using Windows 95 4.00.950.
- *3 Depending on the computer's performance and capacity, this software may not provide the expected performance (for example, operation may be extremely slow).
- *4 The above software programs are required for PixLab Media Browser to operate. They must all be installed on the computer. If the equivalent software programs are already installed on the computer, there is no need to reinstall it.
- *5 Less space will be required than indicated above if you have already installed software provided by Microsoft.
- *6 Contact your computer's manufacturer to find out if your video card is Compatible with DirectX 6.
- *7 These software products do not operate on Macintosh computers.
- *8 Other conditions or software in addition to those described in the installation guide or online manual may be required for some functions of the software.
- *9 These software programs are included on the CD-ROM.

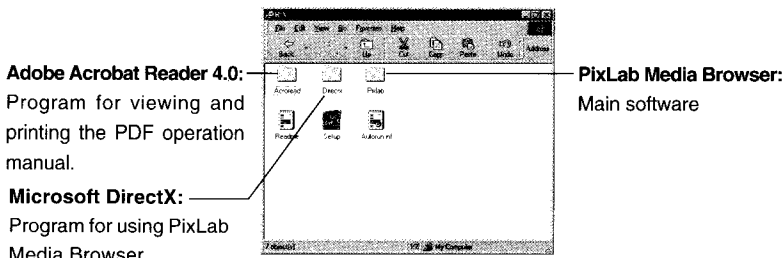
- Microsoft and Windows are registered trademarks of Microsoft Corporation, USA.
- DirectX is a trademark of Microsoft Corporation of the United States and is Copy-righted.
- Acrobat and Acrobat reader are registered trademarks or trademarks of Adobe Systems Incorporated.
- SmartMedia is a trademark of TOSHIBA Corporation .
- All other brand or product names are trademarks or registered trademarks of their respective holders.
- Great effort has been expended to ensure that the descriptions in this manual are correct. Should you, however, come across an inconsistency, a telephone call or letter to Sharp Corporation noting the questionable area would be highly appreciated.
- This software is the property of Sharp Corporation and all related copyright and other rights belong to Sharp Corporation.
- This manual may not be transferred wholly or in part in any form whatsoever without prior written permission. Uses other than personal use are for copyright reasons not permitted without the written permission of Sharp Corporation.
- Sharp Corporation shall in no event be liable for damages, loss of revenue or third party claims arising from the use of the software.
- Software specifications and the contents of the operation manual are subject to change without prior notice.
- Depending on the PC hardware and software you are using, the information in this Operation Manual may not reflect your actual situation.
- Operating speed may slow down depending on computer operating environment and processing capability.
- The software is based on modules developed by the Independent JPEG Group.

Features of this software

PixLab Media Browser is a program allowing you to acquire image data taken on the VN-EZ1 Digital Recorder onto the computer, display lists of the data and write image data stored the computer onto a SmartMedia.

Contents of the CD-ROM

This CD-ROM contains the software listed below:



Internet Explorer 4.01 Service Pack x or Internet Explorer 5 is required to use PixLab Media Browser. If Internet Explorer 4.01 Service Pack x or Internet Explorer 5 is not installed, install it before installing PixLab Media Browser.

Caution

PixLab Media Browser will not operate normally if Internet Explorer 4.01 Service Pack x or Internet Explorer 5 is installed after installing PixLab Media Browser.

PixLab Media Browser Installation Files

Be sure to install the software listed below if it is not already installed on your computer.

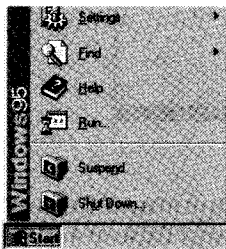
- **Microsoft DirectX 6.1, DirectX Media 6.0**
This software required for using PixLab Media Browser.
- **Microsoft Windows Media Player**
This software is required for playing movie files.
- **PixLab Media Browser Ver.2.0**
This is the main software.

Installing Adobe Acrobat Reader

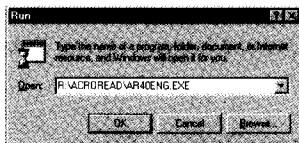
Adobe Acrobat Reader 3.0 or later is required for viewing the PixLab Media Browser online manual. If Adobe Acrobat Reader is not installed on your computer, use the procedure described below to install it.

Installation procedure

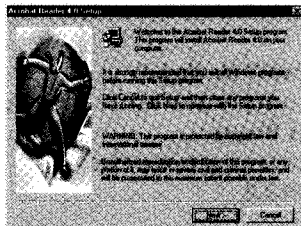
- 1 Turn on the computer's power and start Windows.**
If Windows is already started, quit all running applications.
- 2 Load the PixLab Media Browser CD-ROM into the computer's CD-ROM drive.**
- 3 Click on "Cancel" if the PixLab Media Browser's installer is launched.**
- 4 Select "Run" from the "Start" menu.**



- 5 Type "R:\ACROREAD\VAR40ENG.EXE", then click "OK".**
If your computer's CD-ROM drive is not named "R:", input its correct name.



- 6 Follow the instructions on the screen to install.**



- 7 Once installation is completed, restart the computer.**

Installing PixLab Media Browser

If Microsoft Internet Explorer 4.01 Service Pack x or Internet Explorer 5 is not installed on your computer, install it before installing PixLab Media Browser. See Microsoft Corporation's homepage (<http://www.microsoft.com/>) for information on obtaining Microsoft Internet Explorer.

Caution

PixLab Media Browser will not operate normally if Internet Explorer 4.01 Service Pack x or Internet Explorer 5 is installed after installing PixLab Media Browser. If this happens, uninstall PixLab Media Browser then reinstall it.

If other applications are running, quit them all before installing PixLab Media Browser.

If VR-PK100 is installed on your computer, uninstall it before installing PixLab Media Browser. For instructions on uninstalling VR-PK100, refer to the VR-PK100's operation manual.

Caution

Do not uninstall "PixLab TWAIN(YUV)" when uninstalling VR-PK100. Depending on the type of computer and its settings, some time may be required for the installer's window to switch. It may appear as if operation has stopped during the installation process. This may be due to the fact that the installer's dialog is hidden under another window. If this happens, press "Alt" + "Tab" to switch windows and display the installer's dialog.

1 Load the PixLab Media Browser CD-ROM into the computer's CD-ROM drive.

The PixLab Media Browser's installer is launched.

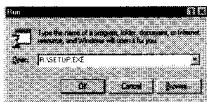
Caution

If the start up window isn't displayed after you waited for a while. Select "Run" from the "Start" menu.

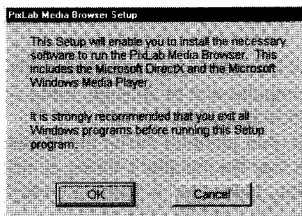


Type "R:\SETUP.EXE", then click "OK".

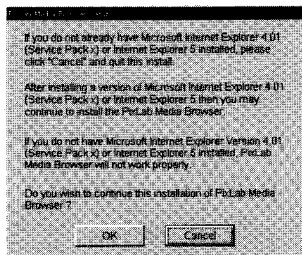
If your computer's CD-ROM drive is not named "R:", input its correct name.



2 Click "OK".

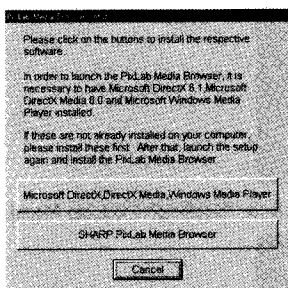


3 Check the message, then click "OK".



4 Click the “Microsoft DirectX, DirectX Media, Windows Media Player” button if these programs are not installed.

Click the “SHARP PixLab Media Browser” button if these programs are already installed, then proceed to step 8.



Caution

If the software programs listed below are not installed on your computer, be sure to install them. If these programs are not already installed on the computer, PixLaB Media Browser will not be installed properly.

- Microsoft DirectX 6.1, DirectX Media 6.0
- Microsoft Windows Media Player

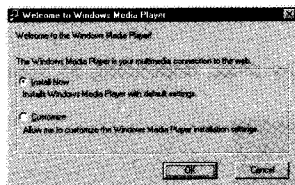
Even if these software programs are already installed on your computer, PixLab Media Browser may not operate normally due to differences in the installed versions, etc.

When the included Windows Media Player is installed, any previously installed version of Windows Media Player may be overwritten.

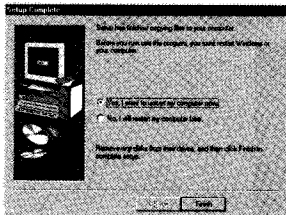
5 Click “OK”.

Installation starts. Follow the instructions on the screen.

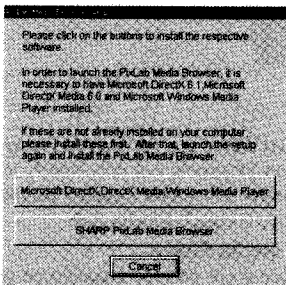
The window shown below will be displayed during installation if you include the Windows Media Player in the installation software. Select “Install Now” if there is no problem.



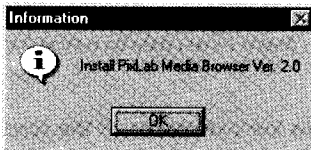
- 6** Once installation of DirectX, DirectX Media and Windows Media Player is completed, the window shown below appears. Click “Finish”.



- 7** Repeat step 1 to 3 and click “SHARP PixLab Media Browser”.



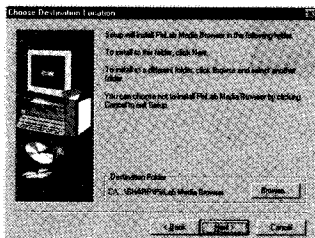
- 8** Click “OK”.



- 9** Specify where the program is to be installed, then click “Next>”.

The default setting is “C:\Program Files \SHARP \PixLab Media Browser”.

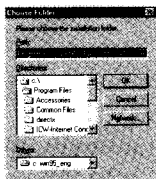
The drive name (C :) may differ, depending on your computer's environment.



Note

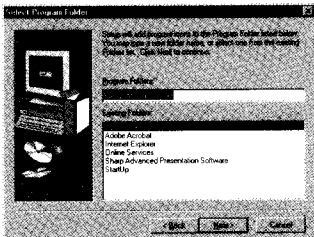
If you wish to change the location where the program is to be installed in step 9.

Click "Browse..." to open the "Choose Folder" dialog.



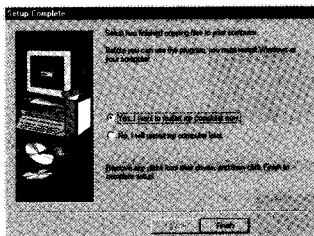
Type pathname directly or select the folder into which the program to be installed using "Drives:" and "Directories:".

10 Select the program folder, then click "Next>".



The default setting is "PixLab Media Browser".

11 Once all the programs have been installed, the window shown below appears. Click "Finish" to complete the setup.



Depending on your usage environment, it may be necessary to restart the computer.

A shortcut icon is created on the desktop.



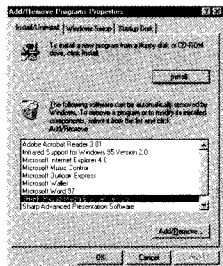
Uninstalling the Software

- 1 Double-click on the “Add/Remove Programs” icon in the Control Panel window.



Add/Remove Programs

You can open the Control Panel by clicking on **Start** button, then “Settings” and then “Control Panel”, or by clicking on “My Computer” on the desktop and then on “Control Panel”.

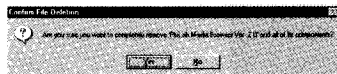


- 2 Select “SHARP PixLab Media Browser Ver. 2.0” from the list and click on **Add/Remove**.

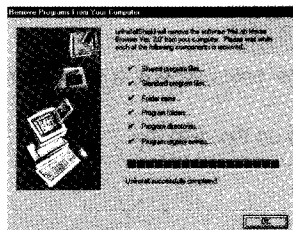
A confirmation message appears.

- 3 Click on “Yes”.

Windows uninstalls the PixLab Media Browser.



- 4 When uninstallation ends, click on “OK”.



Viewing the online manual

If Adobe Acrobat Reader is not installed on your computer, install it following the instructions on page 6 before proceeding.

Viewing the online manual by opening it independently


- 1 Put the cursor on “PixLab Media Browser” in “Programs” of the “Start” menu, then select “PixLab Media Browser Manual”. The Acrobat Reader is launched and the online manual is displayed.

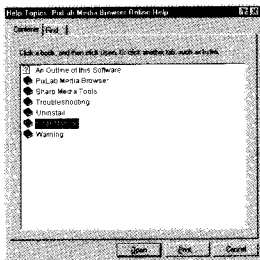
Caution


This Program folder name will become what is you set at the installation of the PixLab Media Browser.

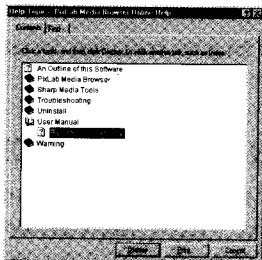
Viewing the online manual by using the help function of the PixLab Media Browser


You can view the online manual by using the help function of the PixLab Media Browser.

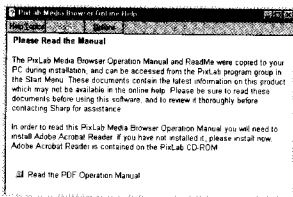
- 1 Double-click on the shortcut icon on the desktop computer to launch the PixLab Media Browser.
- 2 Select “Table of Contents” from the “Help” menu in the PixLab Media Browser.
- 3 Click on “Open” after selecting “User Manual” or double-click on  of “User Manual”.



- 4** Click on “Display” after selecting “Read the User Manual” or double-click on  of “Read the User Manual”.



- 5** Click on  of “Read the PDF Operation Manual” . The Adobe Acrobat Reader is launched and the online manual is displayed.

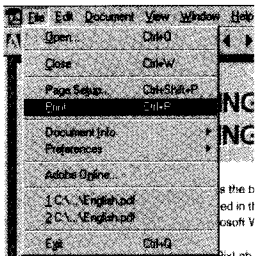


Printing the online manual

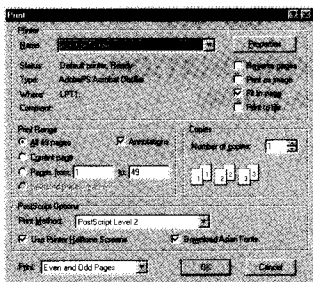
Print out the online manual so you can consult it whenever necessary.

1 Launch Acrobat Reader and display the online manual.

2 Select “Print” from the “File” menu .



3 Click “OK”.
Printing starts.



Depending on the environment of your computer and printer, your computer's screen may appear different from the screen shown here.

SHARP®

SHARP CORPORATION

OSAKA, JAPAN

Printed in Japan
TINSE0346TAZZ
T2189-A
9P06-JWM